

PW

Naval Torpedo Station,

Newport, R. I.,

Oct. 12, 1904.

Sir:

The following is a report of a test of an experimental collision head supplied by the E. W. Bliss Co.:-

1. This head was fitted to a Mark I, 3.55 metre, torpedo and run end on into a stone sea wall.

Data before firing: Air pressure, 850 lbs.
 Regulator, 6-1/2 turns.
 Distance gear, 200 yds.
 Immersion, 5 ft.
 Weight of head in water, 22 lbs.
 Length of head, 2 ft. 3-3/4 in.

The torpedo struck end on after a run of 100 yards and remained with the nose against the sea wall floating, slightly tail heavy, until picked up. The collision head was badly telescoped and a crack 4 in. long was opened in one place. The copper was scratched by the rough surface of the stone. The collision head was so badly damaged that it could not easily be repaired. The Holmes light ignited and burned efficiently.

Data after firing: Air pressure remaining, 475 lbs.
 Weight of head in water, 34 lbs.
 Length of head, 20-5/16 in.

It will be noticed that the buoyancy of the collision head was greater before than after firing.

2. Photographs of the collision head after firing are enclosed.

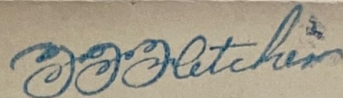
T.S.

-2-

10/12/04.

3. It was not considered advisable to continue these experiments against a stone wall. A target will be constructed of plates 1/8" thick, representing the side of a torpedo boat, and the experiments will be continued. The plates are due to be delivered now.

Very respectfully,

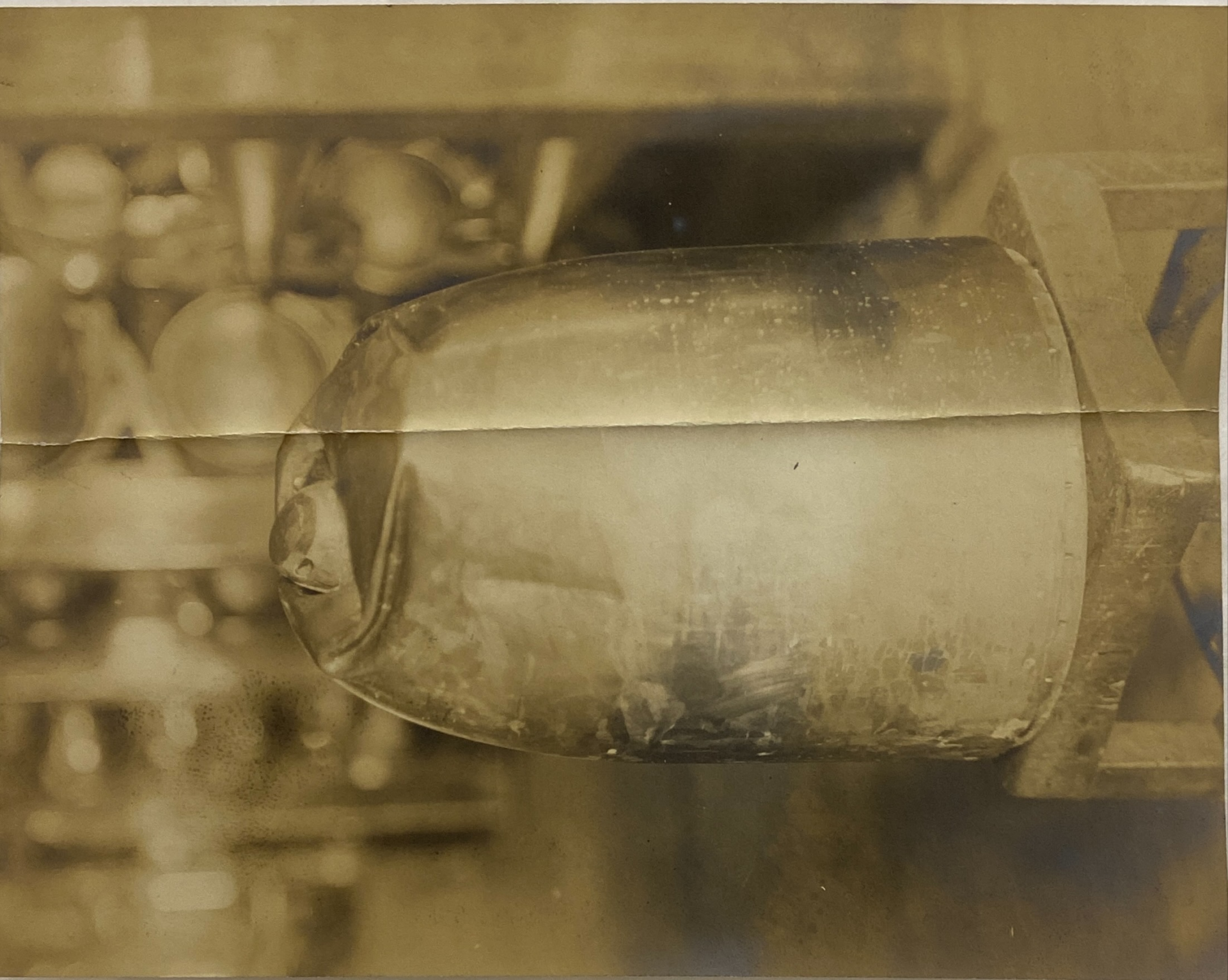


Commander, U. S. N.,

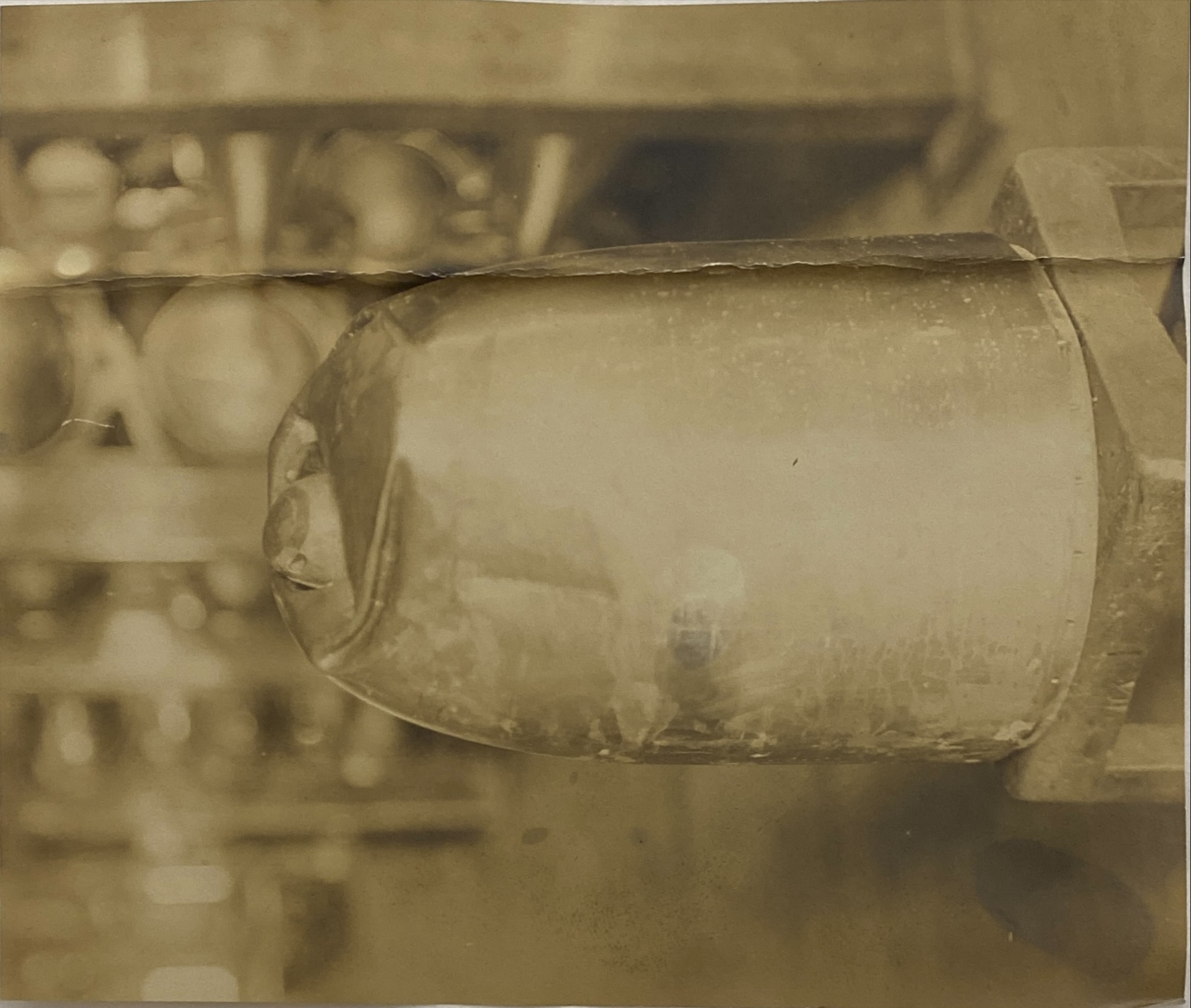
Inspector of Ordnance in Charge.

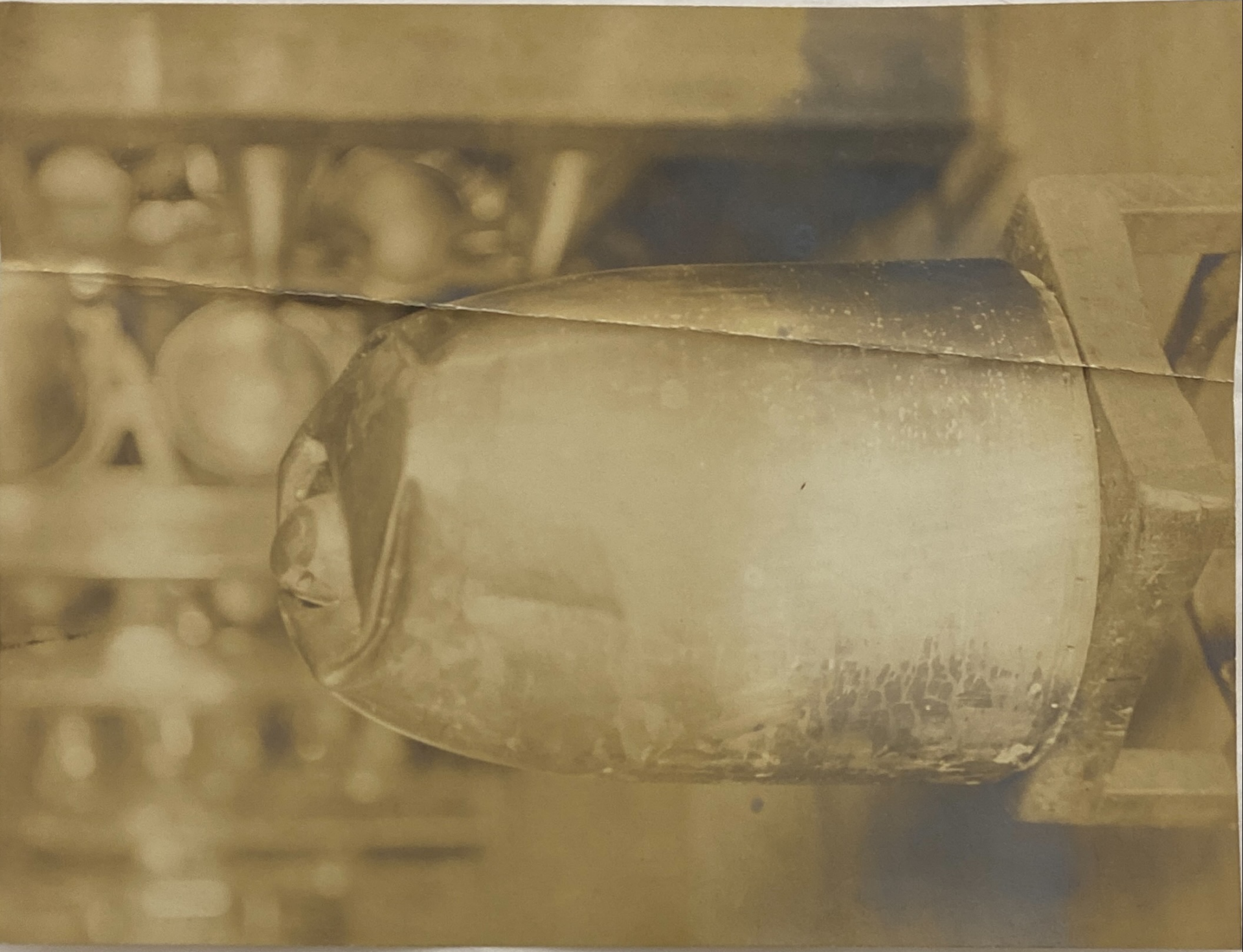
Chief of Bureau of Ordnance,
Navy Department,
Washington, D. C.

B.





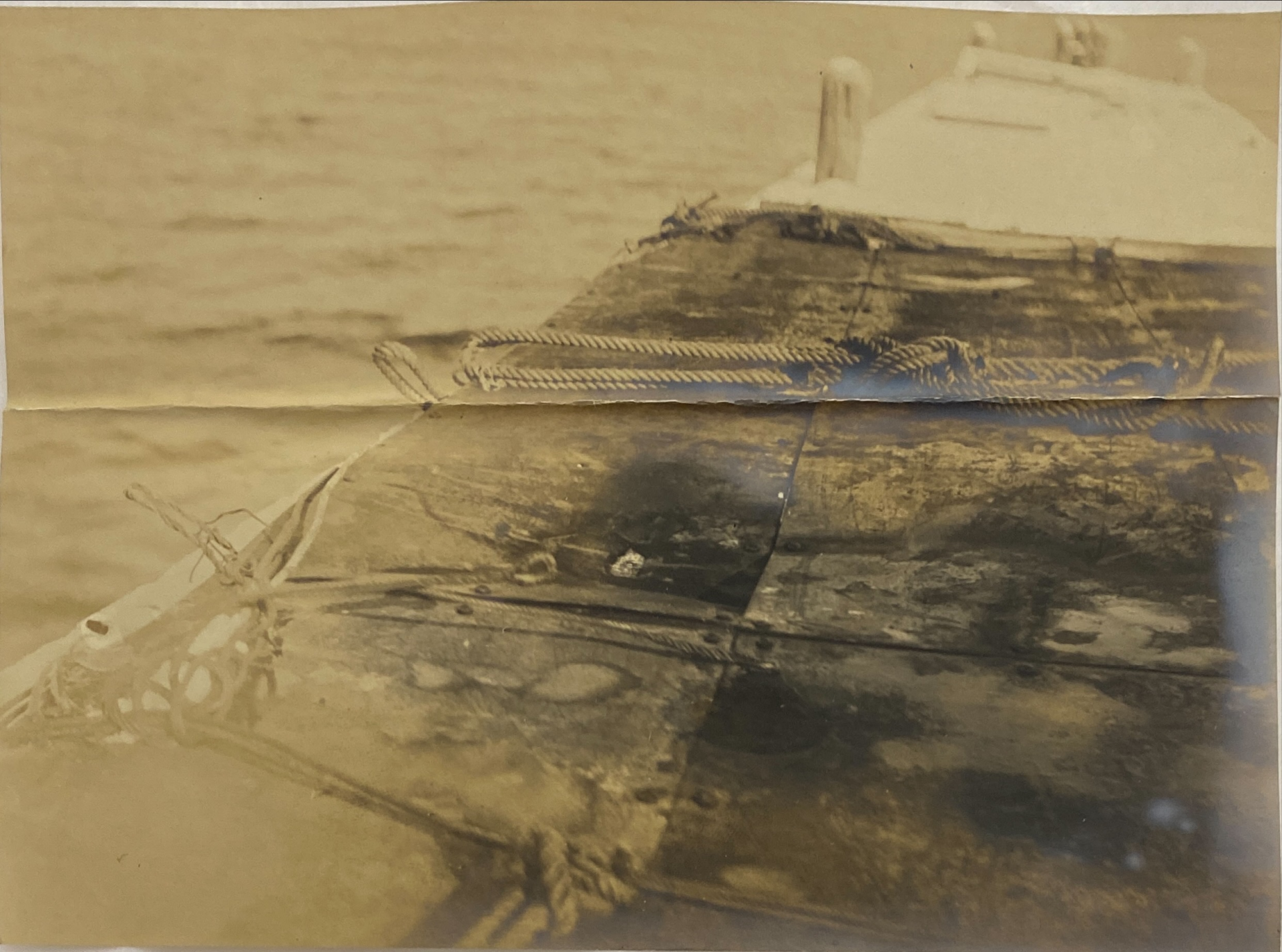












4497	Torpedo Station,	
398	Received	OCT 12 1904

to

130

Report on experts with
collision head from
C.W. Bliss Co.